

IDAHO

Idaho Department of Lands

Urban tree canopy (UTC) coverage in Idaho's major cities is lower in historically underserved communities. This lower UTC often results in higher heat-island effects and health issues for underserved communities and groups. The Idaho Department of Lands' Urban and community forestry program (IDL UCF) is addressing this equity issue by utilizing canopy assessment data to expand educational outreach to historically underserved communities and groups. IDL works closely with regional canopy networks, like the Treasure Valley Canopy Network (TVCN), and local municipalities to identify and promote further UCF educational outreach to underserved socio-economic, gender, and ethnic groups.

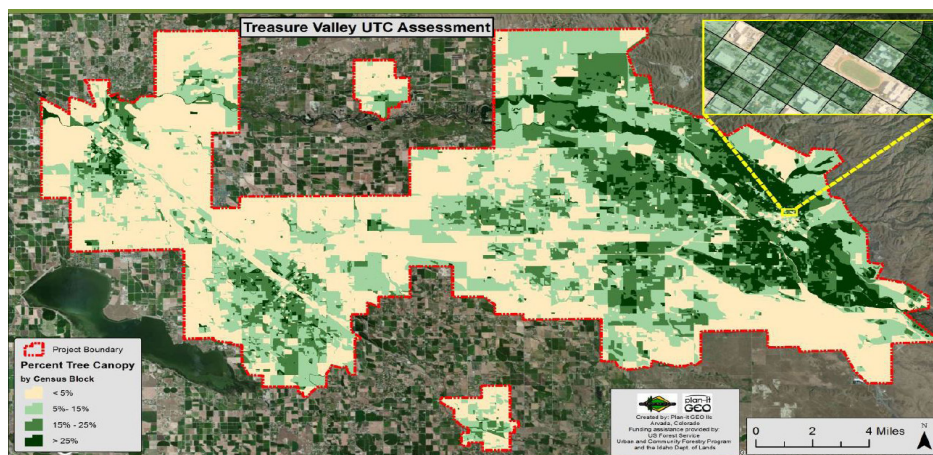
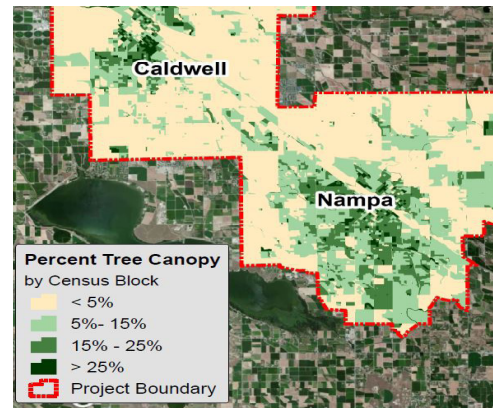
The Idaho Department of Lands' Urban and Community Forestry program advances equity within Idaho's urban and community forests by utilizing data from several Landscape Scale Restoration (LSR) grant-funded tree canopy assessments to identify equity gaps within the program. IDL currently utilizes data from three LSR funded canopy assessments to identify areas within municipalities that lack urban canopy coverage, shade trees, and access to open spaces. IDL utilizes the tree assessment data and neighborhood census data to identify project focal areas in disadvantaged communities.

Identifying these disadvantaged communities recently resulted in the funding of a direct grant from the USDA Forest Service to the TVCN. The TVCN will utilize IDL's tree assessment data to complete an equity analysis of Boise's tree canopy. This equity analysis will more closely examine tree canopy cover, urban heat indicators, human health, income, housing inequities, and potential tree planting locations within Boise's disadvantaged communities.

IDL also promotes equity within the urban and community forestry program by sponsoring a diversity candidate to the Municipal Forestry Institute (MFI) each year. The IDL UCF program provides outreach to minority and female

arborists to assist them with the application process and encourage them to apply to this Society of Municipal Arborist's program. Recent successful attendees from Idaho's community forestry programs included arborists from underserved Hispanic communities.

The IDL UCF program is also committed to increasing opportunities for women in the arboriculture and the science, technology, engineering, and math (STEM) fields, and will be sponsoring a scholarship for an attendee at SMA's MFI leadership development workshop.



(Left) IDL's UCF program utilizes urban canopy coverage data from the fiscal year 2010 LSR grant to identify census blocks with historically underserved groups that have inadequate canopy coverage. Photo: Plan-it Geo/Idaho Department of Lands

(Above) Idaho's Canyon County cities (Caldwell and Nampa) are a focal project area for IDL's UCF equity outreach due to low urban canopy coverage and large historically underserved Hispanic populations. Photo: Plan-it Geo/Idaho Department of Lands